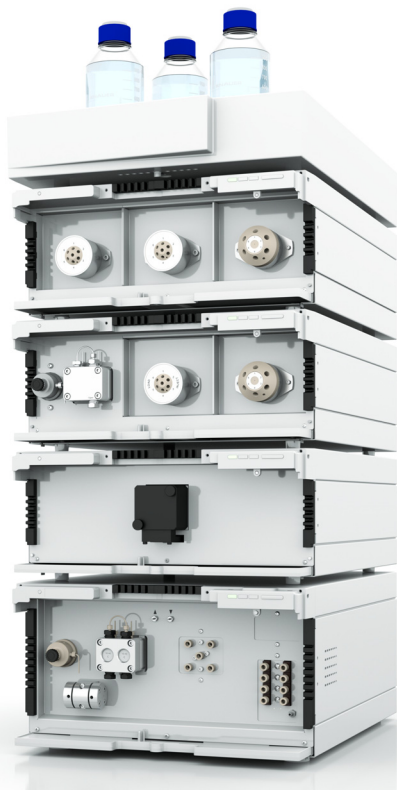


Product Information

Cooling with a thermostat provides cooling for the filtration processes. You can integrate in the cooling circuit up to 3 glass columns on one multi column base and a fraction collector. Glass columns with tempering jackets can be tempered from 2° C. Any additional cooling room or refrigerator is not necessary, which saves you some space.

KNAUER offers the multi column base as accessory for the AZURA BIO LC System.



Note: Only use the cooling for laboratory operation and allow trained technicians to operate it.

Manufacturer

KNAUER Wissenschaftliche Geräte GmbH
Hegauer Weg 38
14163 Berlin

Technical Data

weight 27.4 kg
dimensions (w×h×d) 60 cm × 130 cm × 40 cm
temperatures 2° C – 60° C

Repeat Orders

A70050	Bio LC Thermostat
A70190	Multi Column Base Bio
A70195	includes A70050 and A70190

Setup

The multi column base is shipped in two packages. The column holder ① is screwed to the base plate ② with the included 4 screws.



Assembling the Multi Column Base

Tools: Allen screwdriver (included with accessory kit)



WARNUNG! Damage to the back when lifting or carrying the multi column base alone!
- To prevent injuries, lift or carry the device with the help of a second person.

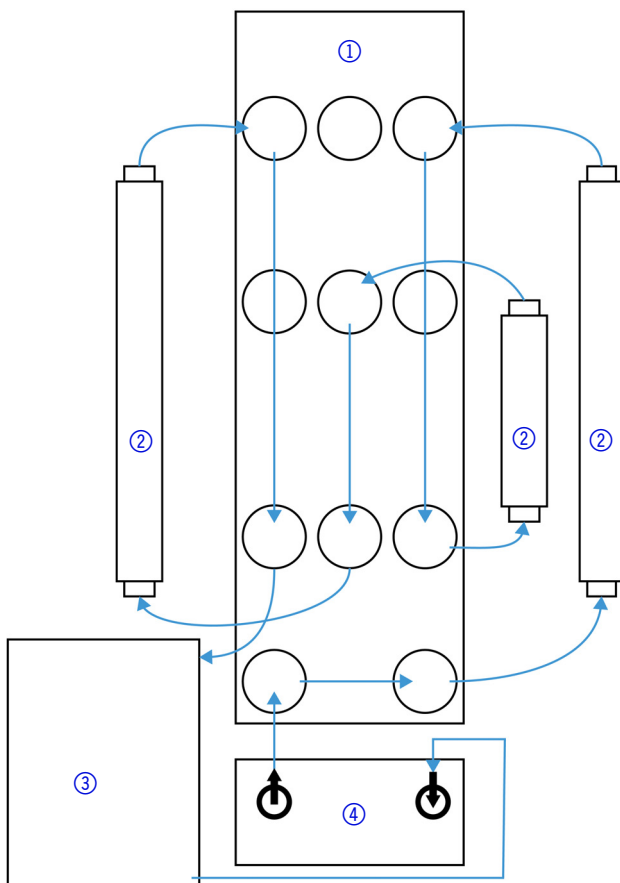
1. Position the inner edge of the multi column base against the base plate.
2. Fix the column holder with the screws.
3. Using the screwdriver, fasten the screws.



Initial Startup

The connectors for the cooling unit have safety valves. As soon as you disconnect, the openings are being closed. Thus they are secured against leakage.

Scheme of Cooling Circuit



Legend

- ① multi column base
- ② glass column
- ③ fraction collector
- ④ thermostat

Attaching the Tubings to the Multi Column Base

The connectors of the multi column base come readily mounted and must not be removed. How to connect the connectors on the side of the tube is described in the following section. The accessory kit contains silicon tubings, connectors for the tubes, and insulation tubes, which are all required for the next steps.

Tip: You can fasten the connectors and the silicon tubings using cable binders.

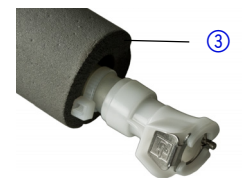
1. Take one silicon tube and one connector ① from the accessories kit.



2. Push the silicon tubing ② onto the connector for the tube.



3. Take one insulation tube ③ and put it over the silicon tubing.



4. Connect the connectors for the tubes with the connectors ④ on the rear side of the multi column base.



Connecting the Tubings to the Column or Fraction Collector

Both glass columns and fraction collector have olive-type tube fittings, which serve to connect the tubings.

1. Push the silicon tubing onto the olive-type tube fitting.
2. If possible, fasten the connection with cable binder.
3. Put the insulation tube over the olive-type tube fitting.

