

Science Together



# AZURA® Preparative HPLC

Flexible purification solutions



This print product is awarded with the Blue Angel.

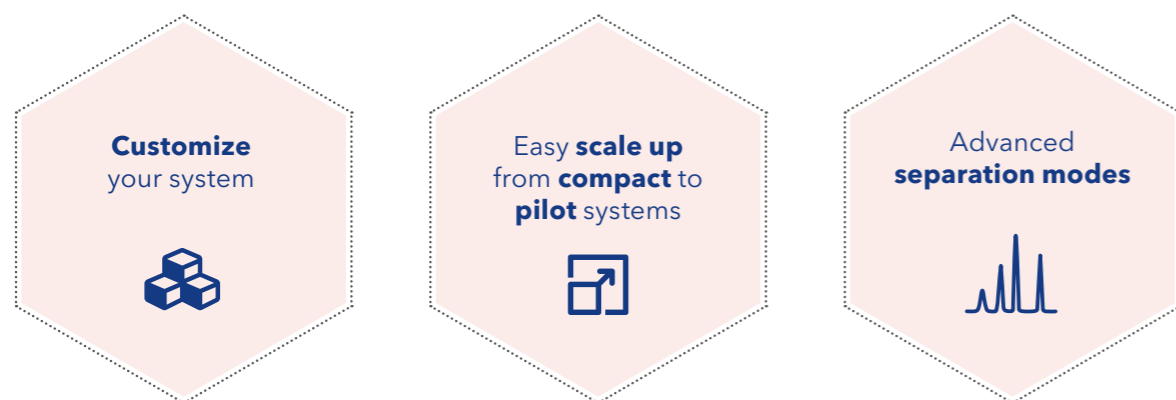
[www.blauer-engel.de/uz195](http://www.blauer-engel.de/uz195)



# AZURA® Preparative HPLC

## Customized purification

AZURA® preparative systems are the perfect solution for frequently changing separation tasks - from milligram to kilogram scale. Design your AZURA preparative system to your needs and combine flexibility and reliability.



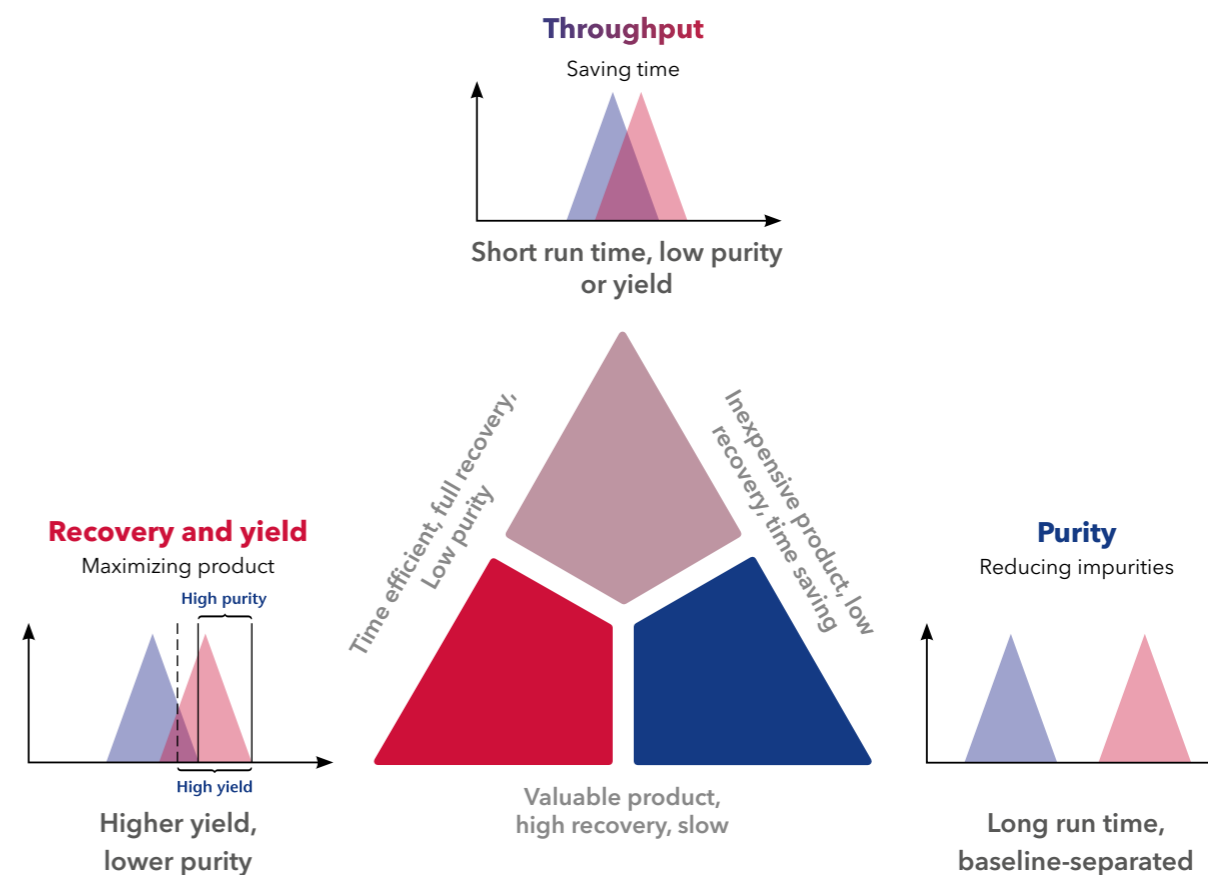
AZURA® Prep systems are tailor-made for you. Configure your system from injection to detection and choose between different materials, flow rates, valves and detectors.

Due to the flexible design of our devices, you can easily change parts like pump heads or flow cells and integrate all components of the compact into the pilot-scale system.

AZURA® Prep systems can be used for special separation modes like peak recycling and stacked injections. We help you to configure your system and choose the best software for you.

## Purification strategy: Prioritize purity, throughput or yield?

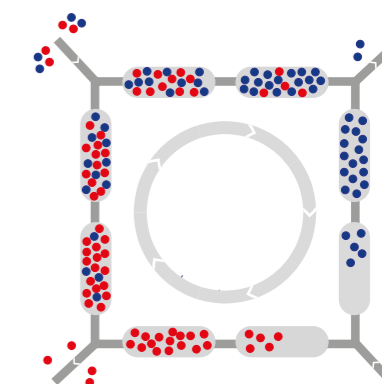
The dependencies between throughput, purity and yield always have to be considered in HPLC purifications. Whatever priority you decide for, with the AZURA preparative systems you can successfully adapt.



## High purity and high yield with continuous chromatography

The AZURA SMB systems are the solution for your continuous purification task. Get higher productivity and purity than with comparable batch systems. Save up to 90 % of the solvent and reduce the solid phase costs up to 80 %.

For more information see page 32.



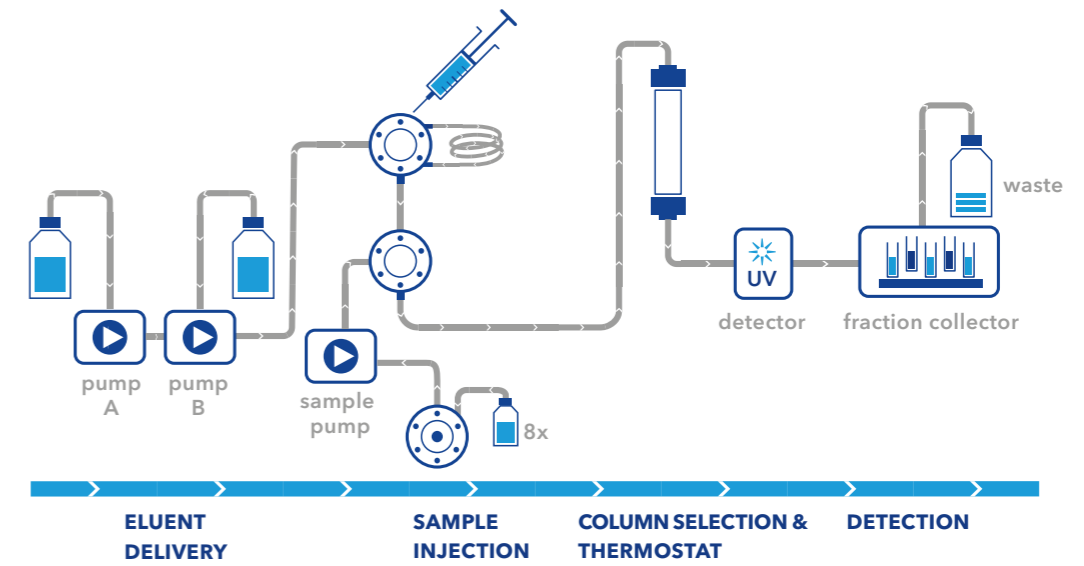
Scheme of SMB principle

## Preparative chromatography

The general objective of preparative chromatography is to isolate, purify and collect your target compounds. Preparative applications are often initially performed on an analytical level and need to be upscaled. Depending on the desired scale, the requirements for a preparative system differ in eluent supply, sample injection, column, and detection. We customize our systems to meet your chromatography scale-up and purification challenges. Benefit from our experience in preparative chromatography.

For more information: [www.knauer.net/prep](http://www.knauer.net/prep)

# Flexibility and performance



**HPLC module docking station** ○  
Customizable combination of valves, detectors and pumps in one housing e.g. for sample injection (see page 10)

**Fiber optics flow cell** ○  
Measure close to the column to minimize peak broadening with fiber optics (see page 17)

**HPLC column** ○  
Preparative separation columns (see page 15)

**Multi Column Base** ○  
Securely position up to three preparative columns, customize and organize your system with a wide range of accessories (see page 24)

○ **Sample selection and injection**  
Manual or automated injection: use a valve or a valve with feed pump (see page 11 + 12)

○ **Mobile Control**  
Optional touch display and control tool for AZURA systems (see page 27)

○ **Detection**  
Various detector types (UV/VIS, DAD, RI, FL, MS) and a selection of flow cells for a wide range of flow rates (see page 16)

○ **Fraction collection**  
Fractionation valve or fraction collector for various flow rates (up to 1000 ml/min) (see page 20)

○ **Eluent delivery**  
A choice of pumps with pump heads available in different materials allows maximum flow rates from 50 - 1000 ml/min. Isocratic, low and high pressure gradient forming are possible (see page 8)

**Most flexible system solutions on the market**

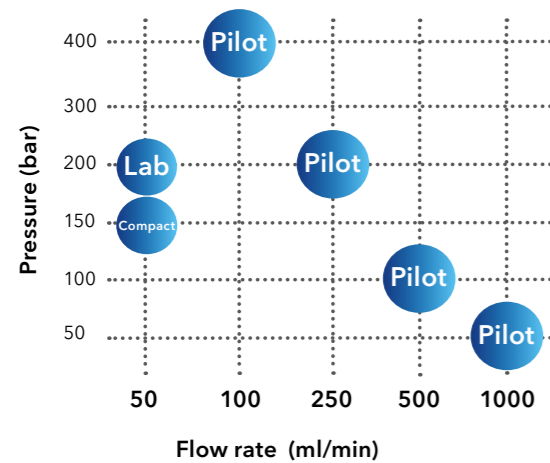
**High or low pressure gradient 50 - 1000 ml/min**

**User friendly and powerful software**

# AZURA® Preparative HPLC

## Upscaling from compact to pilot

The modular AZURA Preparative HPLC platform offers you the opportunity to build a purification system best suited to your needs.



**AZURA® Compact Prep LC**  
Flow rate max. 50 ml/min\*  
Isocratic



**AZURA® Lab Prep LC**  
Flow rate max. 50 ml/min\*  
Isocratic/HPG



**AZURA® Pilot Prep LC**  
Flow rate max. 1000 ml/min\*  
Isocratic/LPG/HPG

AZURA system	Available pump heads Max. flow rate in ml/min*					Gradient options	
	50	100	250	500	1000	LPG low pressure	HPG high pressure
AZURA Compact Prep LC	•						
AZURA Lab Prep LC	•						•
AZURA Pilot Prep LC		•	•	•	•	•	•

\* Information on best working conditions on pages 8-9.

### Scale-up from compact to pilot

The AZURA Pilot Prep LC is the ideal solution for your upscaling tasks. The 100 ml pump head allows you to run your system under analytical conditions before adapting your method to preparative scale.

**For more information:**  
[www.knauer.net/prep](http://www.knauer.net/prep)

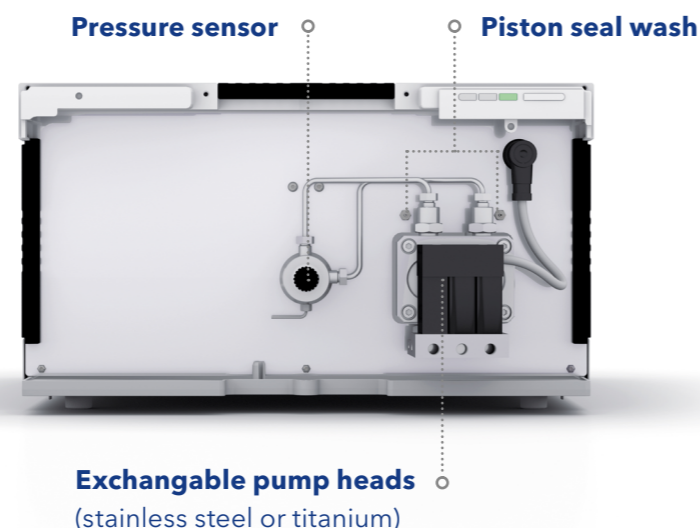
# Eluent delivery

Precise and reliable pumps covering a wide flow range for various gradient and solvent selection options.

## AZURA® Pump P 2.1L

The preparative HPLC pump AZURA P 2.1L covers a wide flow rate and pressure range. It has been designed for the purification of milligram to gram samples. The integrated automatic RFID pump head recognition allows a quick adaptation to various applications.

- **Flow rate** up to 1000 ml/min
- **LPG** and **HPG** gradient options
- Supports **constant pressure mode**

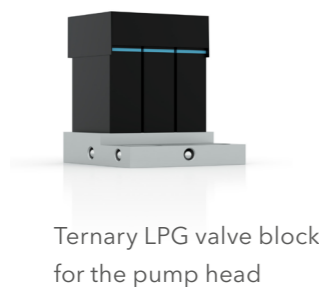
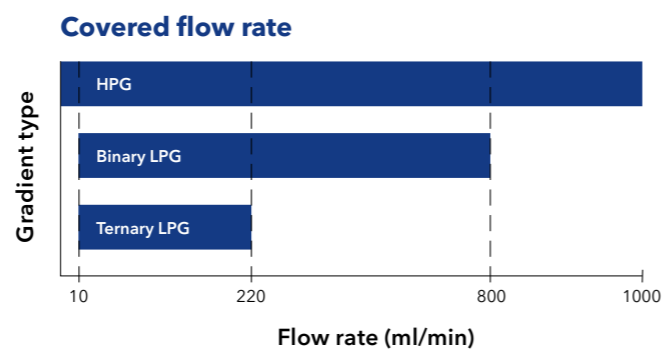


### Gradient options of Pump P 2.1L

A **low pressure gradient (LPG)** module dynamically composes the eluent on the inlet-side or low pressure side of the pump head, by quickly switching between the different solvent channels. We offer binary or ternary LPG upgrade modules for the isocratic P 2.1L.

The eluent in a binary **high pressure gradient (HPG)** system is composed by combining the solvent flows of two isocratic pumps.

Pump head	Max. pressure	Best working conditions
100 ml	400 bar	1 - 80 ml/min
250 ml	200 bar	2.5 - 200 ml/min
500 ml	100 bar	5 - 400 ml/min
1000 ml	50 bar	10 - 800 ml/min



## AZURA® Pump P 6.1L

The AZURA semi-preparative pump P 6.1L with 50 ml pump head is available as an isocratic or binary HPG pump. It is made for medium-size purification tasks and upscaling processes.

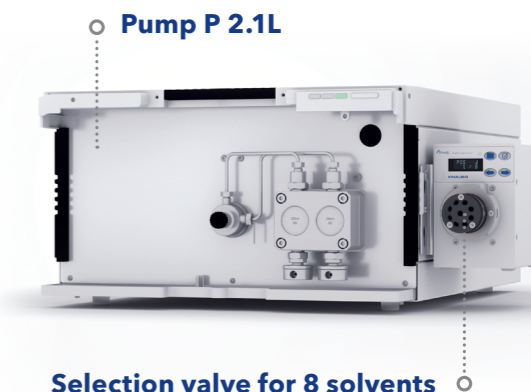


- **Flow rate** up to 50 ml/min
- Best working conditions: **0.1 - 40 ml/min**
- **Binary gradient** with solvent selection valve (2x2 solvents)
- Up to **300 bar**
- Supports **constant pressure mode**

## Solvent selection

For automated solvent change, a solvent selection valve can be attached to the pump P 2.1L.

For semi-preparative purification tasks, the pump P 6.1L features a built-in 2x2 solvent selection valve (high pressure gradient version).



## Docking station for pumps, valves and detectors AZURA® Assistant ASM 2.2L

The Assistant ASM 2.2L is a docking station for three compact devices. Valves, pumps and UV detectors can be combined in one housing. The plug-in modules are removed by loosening four screws allowing the user to exchange modules in case of service within minutes. Likewise, the configuration of the HPLC system can be adapted to new requirements. Routine maintenance work e.g. replacing the lamp of a detector is easily performed by the user.

Depending on the integrated modules the assistant fulfills many different tasks like eluent delivery, detection, sample and solvent selection, sample injection, column switching or fraction collection. An assistant including a pump, injection valve, and detector features a complete HPLC system, like AZURA Compact Prep LC. As a part of a larger system, the ASM 2.2L allows the user to customize the system configuration according to the purification challenge.

### Pumps

Choose from 15 different pumps with 10 or 50 ml pump heads and with or without pressure sensor. The material used is stainless steel, ceramic or Hastelloy C (for pumps without pressure sensors only).

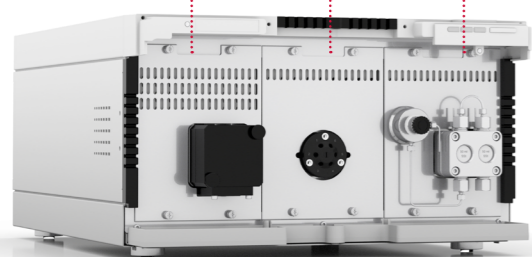
### Valve drive

The universal valve drive identifies valves via RFID technology and enables to read GLP data. All V 4.1 valves, independent of number of ports and position, are supported.

### UV detectors

The compact single wavelength UV detector is available in a basic and fibre optics version. The wavelength can be set between 190 - 500 nm.

Freely combine pumps, valves and detectors in one housing



## Configure your assistant

Use the web-based assistant configurator to find your desired AZURA® ASM 2.2L module combination:

[www.knauer.net/assistantconfigurator](http://www.knauer.net/assistantconfigurator)



## Sample injection

Adapt the sample injection mode to your preparative task.

### Injection valve

The simplest way to inject your sample into the system. Use a manual injection valve and choose from a large range of different sample loops.



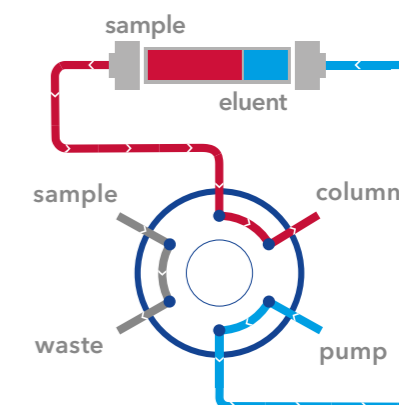
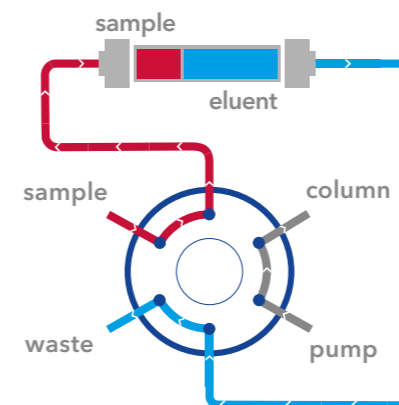
KNAUER offers several injection valves for 1/16" and 1/8" tubing. The wetted parts are made of stainless steel or PEEK to cover a broad range of applications. Injection can be done either manually via hand lever or automated with a valve drive.



### VariLoop for sample injection

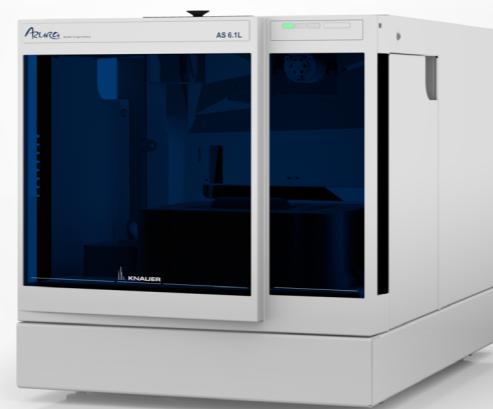
The KNAUER VariLoops are the perfect solution for the injection of medium up to high sample volumes (up to 40 ml). The sample loop can be emptied completely or partially as well as filled completely

or partially. This allows you to work very flexible and easily switch between different sample sizes while keeping constant and reproducible injection volumes for every sample size.



## Autosampler AS 6.1L

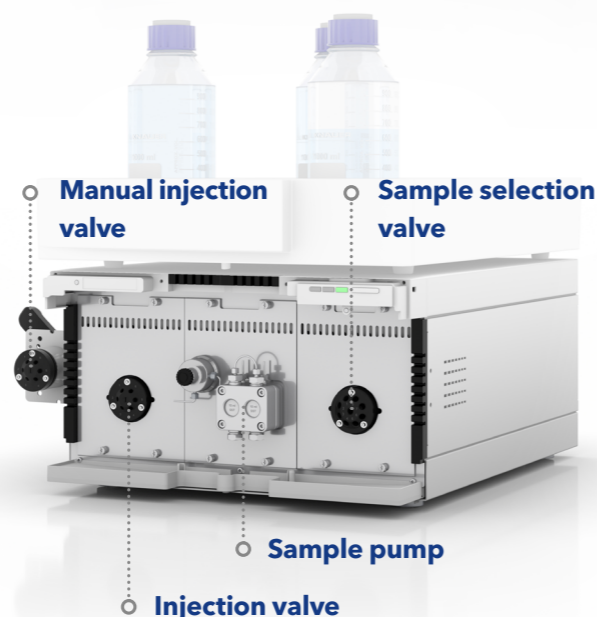
Sample injection can be easily automated with an autosampler. The AS 6.1L can inject up to 10 ml per injection. Sample tray temperature control from 4 - 40°C is optional available. It can handle either 30 samples in 10 ml vials or up to 768 samples in well plates.



## Sample Injection Assistant ASM 2.2L

The AZURA sample injection assistant is based on the docking station for HPLC modules ASM 2.2L. It is designed to automate injection of larger sample volumes and features a sample selection valve, a sample pump, and an injection valve.

Simply attach your sample vessels via 1/8" tubing to the multiposition valve and automate injection with the integrated sample pump and injection valve.



## Sample pump

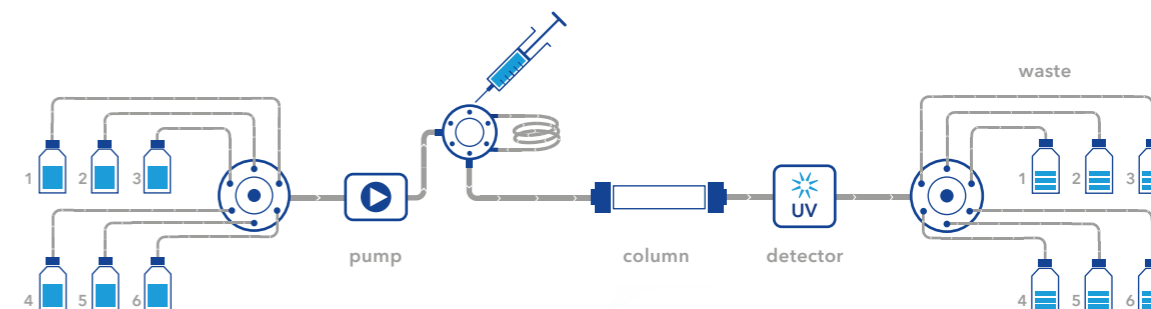
Standalone or as a plug-in module of the HPLC dockingstation ASM 2.2L: The compact pump AZURA P4.1S is perfect for feed injection.

- 10 and 50 ml **exchangeable pump head**
- **Flow rate** range:  
0.01 - 50 ml/min (50 ml pump head)  
0.001 - 10 ml/min (10 ml pump head)
- Pump heads available in **stainless steel** or **ceramics**
- Best working conditions:  
1 - 40 ml/min (50 ml pump head)  
0.1 - 8 ml/min (10 ml pump head)

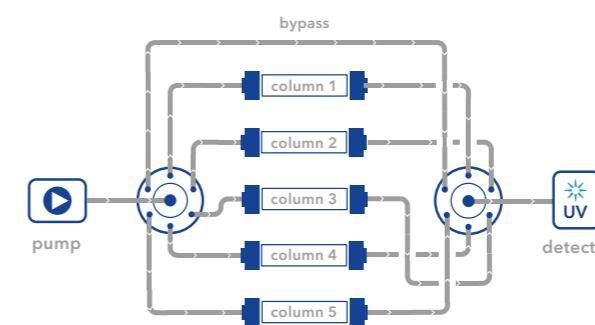


# Multiposition valves for automation

## Eluent selection and fractionation



When automated selection of eluents is required, up to 12 different eluents can be attached to the preparative system. Multiposition valves fulfill many different tasks: solvent and sample selection, fractionation and column switching.



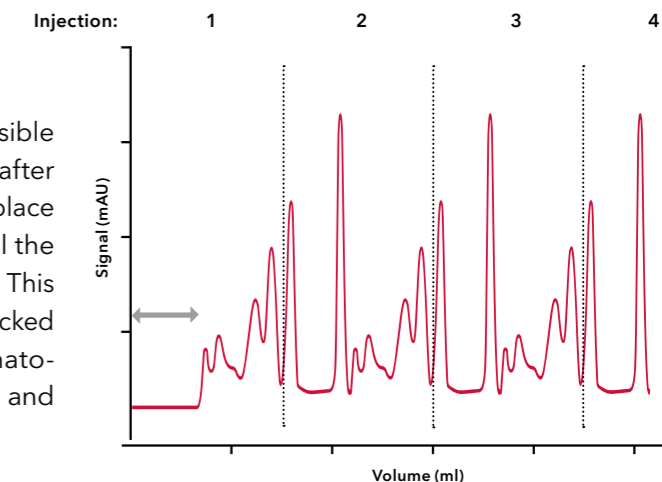
Example for the selection of 5 columns

## Column switching

Switching valves are ideal for screening and scale-up. They can be easily integrated into your system at pressures up to 400 bar and maximum flow rates of 300 ml/min. Up to 16 columns can be selected.

## Stacked injection

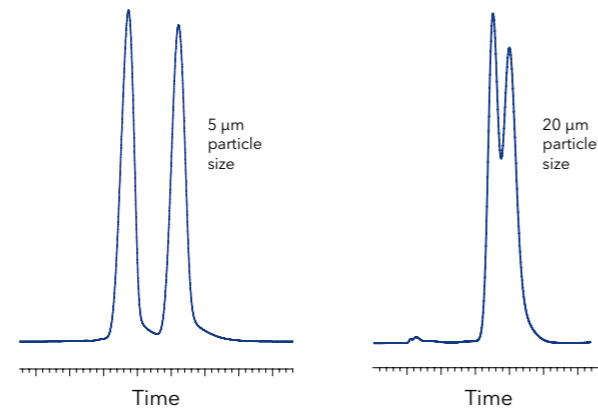
With the stacked injection function, it is possible to perform different runs automatically one after the other. The injection of the next run takes place during the current run, so that the time until the elution of the first peak can be fully exploited. This increases efficiency, saves time and eluent. Stacked injection can be operated with the chromatographic data systems (CDS) PurityChrom® and OpenLab®.



# Peak and solvent recycling

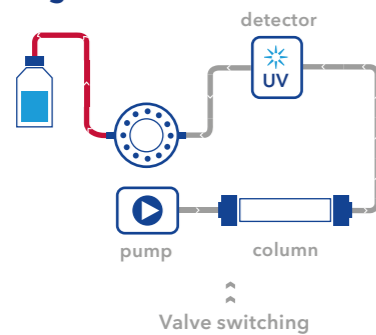
## An example

A separation can be much more demanding after upscaling from analytical to preparative scale. In many cases a baseline separation is not possible anymore, so time and money consuming method development or hardware adjustments are necessary. The AZURA Prep LC system is well-suited to apply the peak recycling technique to solve demanding resolution tasks. Additionally, solvent recycling can be applied to save eluent, if it can be considered clean.

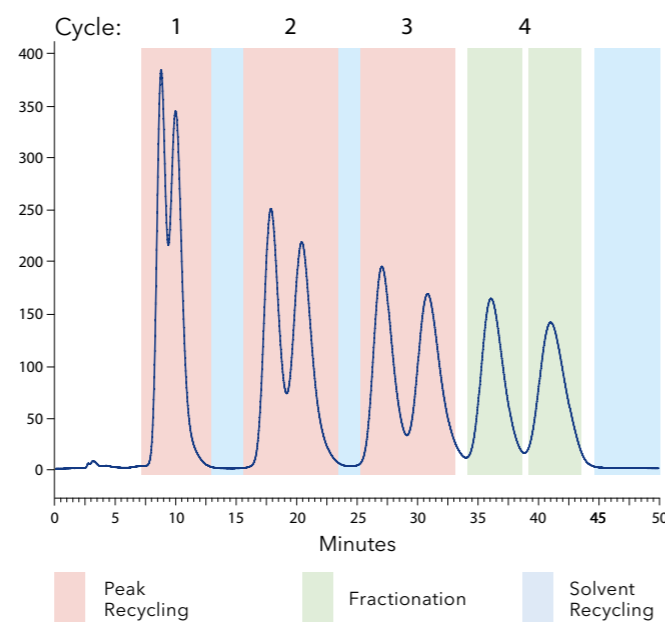
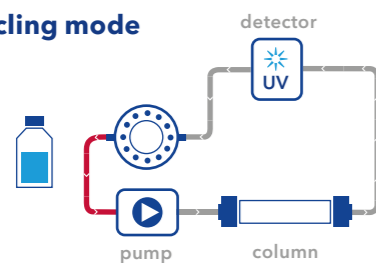


Comparison of analytical and preparative chromatogram.

## Collecting mode



## Recycling mode

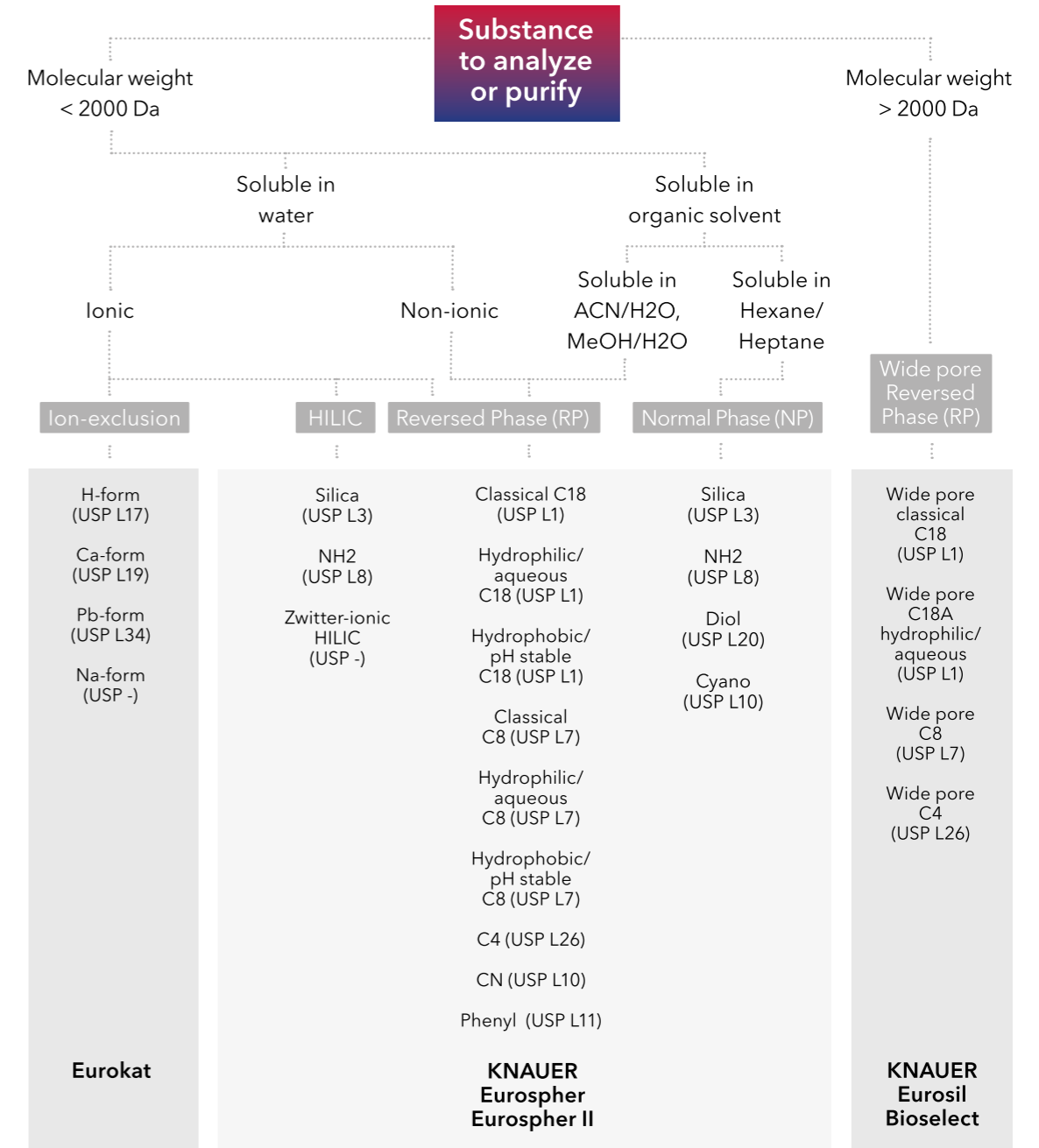


Successful peak separation with recycling mode.

## KNAUER preparative columns

Find the perfect column from the large KNAUER portfolio

This flow chart gives you a guideline how to select the right column for your application. Start at the top and follow the decision lines all the way down to find a column recommendation.



## Application Note (VTN0005)

Comparing sensitivity levels for the analysis of fluorescence-labeled proteins  
[www.knauer.net/applications](http://www.knauer.net/applications)



## KNAUER Column Selection Guide

For more information on the KNAUER column portfolio visit:  
[www.knauer.net/columns](http://www.knauer.net/columns)



# Detection

KNAUER gives you the opportunity to analyze nearly every compound due to a large portfolio of HPLC detectors. For the achievement of your analysis goals and for matching your separation scale, our detectors are flexible in the setup, including flow cells and fiber optics. Our product line of UV/VIS detectors ranges from single variable wavelength to 8-channel diode array detectors with 3D scan capability.



Detector	UVD 2.1S	UVD 2.1L	MWD 2.1L	DAD 2.1L	DAD 6.1L
	Compact and versatile UV detector	Reliable UV/VIS detector for a wide spectrum of applications	Robust multi-channel UV/VIS detector	Versatility through a wide flow cell range	High-end diode array detector with outstanding performance
Wavelength	190-500 nm	190-750 nm	190-700 nm	190-700 nm	190-1000 nm
Channels	1	1	8	8	8
3D scan				•	•
Fiber optics available	•	•	•	•	•

## Flow cells for UV/VIS and DAD detectors

Select from an impressive range of easily exchangeable preparative and semi-preparative flow cells for UV/VIS and DAD detectors. With capillary connections ranging from 1/16" to 1/4" and TRI-Clamp adaptations, optional fiber optics technology and a variety of flow cell wetted materials, a wide spectrum of applications can be covered.

Max. flow rate	Connectors	Path length	Volume	Max. pressure	Fiber optics available
50 ml/min	1/16"	3 mm	2 µl	300 bar	•
250 ml/min	1/16"	0.5 mm	3 µl	200 bar	•
1000 ml/min	1/8"	0.5/1.25/2 mm	1.7/4.3/6.8 µl	200 bar	•
10000 ml/min	1/4"	0.5/1.25/2 mm	1.7/4.3/6.8 µl	200 bar	•

## Fiber optics technology

### More flexibility

Fiber optic cables offer the possibility to separate the flow cell from the detector. This enables demanding applications such as measuring directly after a heated LC column or in hazardous environments, allowing safe operation of the instrument while maintaining performance.

### Safe operation

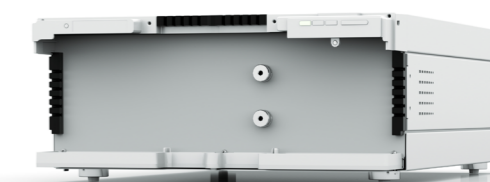
When working at high flow rates, separation of the flow cell and the detector is a safety feature. In case of leakages, no damage to the detector occurs. Fiber optics are available in a customized length of up to 10 meters.



Flow cell with 1/4" TRI-Clamp connection

## AZURA® RID 2.1L HighFlow Preparative refractive index detector

The AZURA RID 2.1L HighFlow is a sensitive and competitively priced differential refractometer. It is suitable for detecting compounds with little or no UV activity such as alcohols, sugars, lipids or polymers in high concentrations. This instrument is designed for use in semi-preparative and preparative HPLC for flow rates up to 100 ml/min. Optional are higher flow rates possible with a flow splitter. The intelligent temperature control guarantees fast baseline stabilization and stable operation.



### Application Note (VPH0068)

Cyclodextrin purification Part 2 - Method transfer and purification  
[www.knauer.net/applications](http://www.knauer.net/applications)



## Special detection

Choice of specialized detection technology, fully integrated in PurityChrom®. Suitable for preparative LC with the help of a flowsplitter.

### Light Scattering Detector Sedex LC

Sensitive universal detection with the possibility to run gradients

As a universal detector, an ELSD detector offers numerous possibilities for detecting substances that have few or no chromophores. Since the eluents are evaporated, the use of non-UV-compatible solvents poses no problems and the ELSD is gradient compatible.

**Target analytes:** Carbohydrates and similar compounds, detergents, ionic and non-ionics, artificial sweeteners, antioxidants, amino acids, lipids, peptides, polymers, pesticides, proteins, steroids.



### AZURA® Conductivity Monitor CM 2.1S

The Conductivity Monitor CM 2.1S can monitor salt gradients with flow rates of up to 100 ml/min and a maximum pressure of 100 bar. It supports a wide measurement range of 0.01 mS/cm - 999 mS/cm. Flow cells in PEEK for both analytical and preparative scale are available.



**pH option available**

## Mass spectrometry solution by KNAUER 4000 MiD

The KNAUER 4000 MiD is a single quadrupole MS with a spraychip ionization source. It is able to perform both positive and negative electrospray ionization and features the scan modes full scan, SIM and interleaved. With its integrated oil-free pump, it achieves a mass accuracy of +/- 0.3 m/z when performing a full scan. With a mass resolution of 0.7 m/z (FWHM), it is the perfect choice for mass directed purification.



#### All-in-one solution

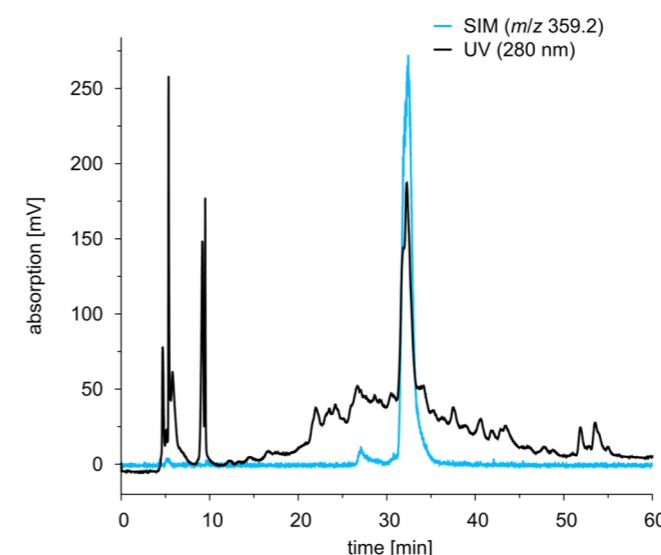
With the integrated vacuum system and integrated electronics inside of one box the KNAUER 4000 MiD brings mass spectrometry to places where no other spectrometer can be deployed.

#### Target analytes

With a mass range of 800 m/z the KNAUER 4000 MiD can be used for a broad variety of applications. In combination with the KNAUER MiDas it is the ideal choice for preparative chromatography and direct introduction methods.

#### Easy to use

With the KNAUER 4000 MiD and its simple 'plug and play' consumables mass spectrometry gets as easy as possible.



#### Purification of a natural product by mass directed fractionation

Black: UV trace at 280 nm  
Blue: MS trace (SIM) for target compound

# Fraction collection

Collect large quantities or large numbers of fractions

KNAUER offers different valves for fraction collection and variations of trusted fraction collectors. Whether you are doing research and development or production, there is an appropriate solution that suits your application.

**Fractionation modes:**

- Manually** - collection by direct control
- Time-based** - collection at defined time points
- Peak-based** - collection according to detector signal
- Threshold function** - collection according to any signal

## Fraction collectors

### LABOCOL Vario 4000 / Plus

The LABOCOL Vario 4000 fraction collectors are characterized by their high robustness and optimal ratio of dimensions/benefit. The user is not limited to given rack types. The rack layout can be designed according to individual needs. Free rack design. Any rack type can be integrated by de-

fining the number of fraction vessels and their position. The wide application area makes the Vario 4000 series ideal for use in research and development as well as in production. The Vario 4000 models differ in the base area and the flow rate range.

**Rack type**

- 80 Tubes 18 mm / max. 36 ml
- 125 Tubes 10.5 mm / max. 9 ml
- 20 Tubes 36 mm / max. 140 or 240 ml
- 39 Tubes 26 mm / max. 80 ml
- 24 Centrifuge tubes 50 ml



### Foxy® R1 and R2

The Foxy® R1 fraction collector can be adapted to a broad spectrum of applications. Flow rates of up to 125 ml/min for Foxy R1 and 1000 ml for Foxy R2 are possible. Fractions can be collected into 96 well microplates, standard tube sizes, bottles and many more. For essentially unlimited volumes, funnel racks can direct fluids to any collection vessel or downstream process. Both devices can be operated stand-alone or in the chromatography software PurityChrom®.

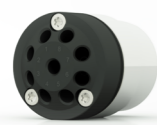
**Rack type**

- 144 Vials 13 mm / max. 9 ml
- 100 Vials 16 mm / max. 20 ml
- 36 Vials 25 mm / max. 70 ml
- 2 Microwell plates 96
- 60 Tubes 1.5 ml
- 72 Centrifuge tubes 15 ml
- 36 Centrifuge tubes 50 ml
- 2 x 9 Bottles 480 ml\*
- 36 Funnels with vinyl tubing
- 26 Funnels with vinyl tubing\*



\* Foxy R2 only

## Fractionation valves



**8 Port Multiposition valve**  
for 1/8", SST  
7 fractions + waste

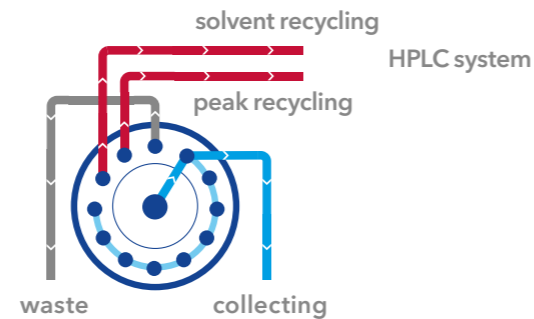
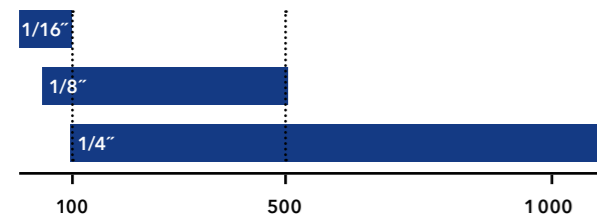


**12 Port Multiposition valve**  
for 1/8", SST  
11 fractions + waste



**16 Port Multiposition valve**  
for 1/16", SST  
15 fractions + waste

**Fractionation valves max. flow rate (in ml/min)**



Device	Max. flow rate (ml/min) 1/16"; 1/8"; 1/4"	Racks	Different rack types	Max. fractions 1/16"; 1/8"; 1/4"
<b>Valve</b>	100 / 500 / 1000			16 / 12 / 10
<b>Foxy R1</b>	25 / 125 / -	1	8	up to 144
<b>Foxy R2</b>	25 / 125 / 1000	2	10	up to 288
<b>Vario 4000</b>	100 / 500 / 1000	3	5**	72*
<b>Vario 4000 Plus</b>	100 / 500 / 1000	5	5**	120*

\* For 50ml tubes

\*\* Device supports other racks via user-defined position setting.

## Temperature control

Increase performance. Minimize solvent viscosity.



### Eluent and Column Heater

When performing preparative LC at temperatures above 40°C in air-conditioned laboratories, a uniform temperature distribution is essential. With the Eluent Heater, solvent temperature can be precisely controlled using the integrated touchscreen. It supports flow rates of up to 500 ml/min and is cleanroom compatible.

### Column Heating Sleeve

Our column heating sleeves are the perfect solution for thermostating your preparative column hardware. Available for all preparative KNAUER column dimensions at temperatures up to 100 °C. Custom dimensions, clean room compatible and autoclavable materials are available on request.

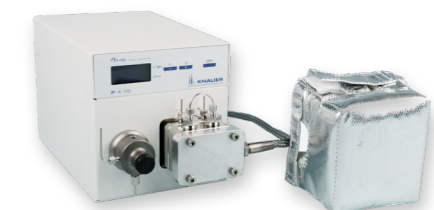


### Column Oven

This oven can heat up to 80 °C. It can accommodate up to 8 KNAUER columns with max. 250 x 50 mm inner dimensions.






### Pump Head Heater






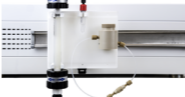


Electrical heating element for pump heads. Temperature can be controlled using the eluent heater or a single device control unit.



# Accessories

Improve system performance, organize your lab bench, and work more conveniently with the right accessories.

Accessory	Features	Benefit
<b>Pump head inlet</b> 	<ul style="list-style-type: none"> <li>Connect one 1/4" tube to the AZURA Pump P2.1L</li> <li>Adapters for other diameters available</li> </ul>	For high flow rates and viscous eluent
<b>Mass flow controller</b> 	<ul style="list-style-type: none"> <li>Unmatched accuracy at flow rates up to 833 ml/min</li> <li>Compatible with PurityChrom®</li> </ul>	Precisely monitor the eluent flow
<b>Dynamic Mixing Chamber</b> 	<ul style="list-style-type: none"> <li>Effective homogenization of eluents</li> </ul>	Better performance
<b>VariLoop</b> 	<ul style="list-style-type: none"> <li>Variable injection volume and multiple injections</li> </ul>	Adapt the sample volume to your application
<b>Interface Box IFU 2.1 LAN</b> 	<ul style="list-style-type: none"> <li>Highly precise analog data acquisition</li> <li>4-channel input/output</li> <li>Sample rates of up to 50 Hz (one channel only)</li> </ul>	Add any detector with analog output to your system

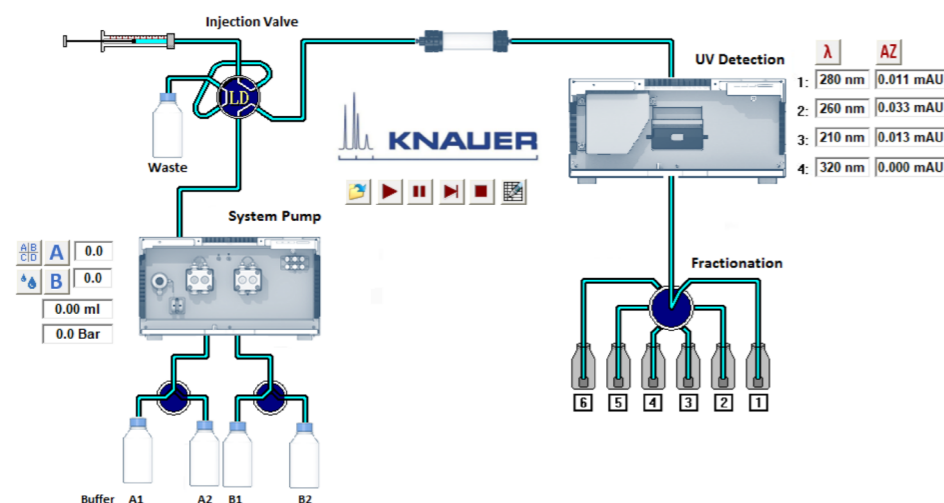
Accessory	Features	Benefit
<b>Column Base</b> 	<ul style="list-style-type: none"> <li>Holds up to three preparative columns</li> </ul>	Flexible operation with up to three columns
<b>Benchtop Rack</b> 	<ul style="list-style-type: none"> <li>Install AZURA systems at space-limited sites, especially in cold rooms.</li> </ul>	Space-saving solution for AZURA system setup
<b>HPLC system table</b> 	<ul style="list-style-type: none"> <li>Holds 4 AZURA L devices and one fraction collector or alternatively 8 AZURA L devices</li> </ul>	Mobile and compact arrangement of a preparative HPLC system
<b>Air Sensor</b> 	<ul style="list-style-type: none"> <li>Detect end of buffer or end of sample with PurityChrom®</li> <li>Up to four air sensors per system</li> <li>For transparent tubings with 1/16" or 1/8" or 1/4" outer diameter</li> </ul>	Protect column from air damage and support automation ( e.g. sample injection)
<b>AZURA® Click</b> 	<ul style="list-style-type: none"> <li>Attach air sensor, pressure control, AZURA Organizer or your interface box to the side panel of your AZURA L device</li> </ul>	Organize your system.
<b>AZURA® Organizer</b> 	<ul style="list-style-type: none"> <li>Attach columns from 5 mm to 26 mm diameter, falcon tubes, pH flow cell</li> </ul>	Organize accessories directly at the system and reduce dead volume
<b>Flow Splitter</b> 	<ul style="list-style-type: none"> <li>Adjustable valve for precise direct control over split ratios</li> <li>Ultra low dead volume fluidic design</li> </ul>	Collect fractions while using your preferred detection method
<b>AZURA® L tubing guide</b> 	<ul style="list-style-type: none"> <li>Single-sided of AZURA L device</li> <li>2 rows with each 16 holes</li> <li>For 1/8" und 1/16" capillaries</li> </ul>	Sort the capillaries coming from the fraction collection valve

# Software solutions

## PurityChrom®

PurityChrom is a powerful software to control your preparative system. Get familiar with PurityChrom in shortest time and with no effort due to the intuitive and clearly structured user interface. Choose a time- or volume based workflow by just

clicking one button. Create methods with highest flexibility to realize complex application without losing easy handling. Offline licenses for creating methods and data evaluation are for free. The software is 21 CFR part 11 compliant.



### Intuitive Control

PurityChrom includes intuitive data evaluation with peak recognition and integration. Due to its high flexibility, methods can be developed according to specific demands. You have the option to create a method based on volume, column volume, or time. There is also the possibility to pause your method during a run. The hold function provides you with complete control over your chromatography process. Solvent visualization calculates the consumption of solvent for the current run and prevents your column from running dry.

### System visualization

The system visualization offers a graphical representation and allows easy handling even of complex flow processes. Furthermore, each device which is displayed in the fluidic scheme can be manually controlled, giving the opportunity to optimize, change and adapt your conditions during the run.

## ClarityChrom® CDS

ClarityChrom is an easy-to-use chromatography data system (CDS) for workstations. Besides support of all KNAUER devices, components and systems from more than 45 manufacturers are also supported. ClarityChrom® includes the drivers for several fraction collectors and supports peak recognition by level and/or slope. The manual fraction control and the option to use the KNAUER electric valves for fractionation give you even more flexibility.

- Fraction collecting via peak recognition (level only, slope only, level AND / OR slope - incl. self-learning) or single event (unconditional, timed event)
- Easy to collect: waste, collect to position / collect to next, solvent recycling
- Direct control during a run - manually switch to: collect, waste, solvent recycling
- Consecutive runs: easily find your chromatogram by clicking on your fraction

## OpenLab

OpenLAB CDS EZChrom Edition provides support of devices from KNAUER and many other manufacturers. The KNAUER fraction collector control option includes the drivers of several fraction collectors and supports fractionation by time, the peak recognition by level and/or slope, also with spectral confirmation. Collect Slices allows for setting a desired volume for each fraction, within the defined fraction vial volume. The manual fraction control and the option to use the KNAUER electric valves for fractionation gives you more flexibility. The combination of virtual detector and virtual fraction collector allows for optimizing the fractionation settings from an existing chromatogram of your separations without any physically existing device and, therefore, without the loss of solvent or target substance.

## Mobile Control (Chrom)

The hand-held Mobile Control (Chrom) allows a complete overview of all devices of the AZURA systems on one screen. Remotely check important parameters or control and monitor devices. The touch-optimized user interface facilitates navigation using just your fingers. The display software Mobile Control provides full access to AZURA devices. Change device settings, set operating parameters, automate device control or check the system status and GLP data... Mobile Control features all functionalities of a device display.

Do you want to acquire data without the overhead of a chromatographic data system? Mobile Control Chrom features data acquisition from AZURA detectors in addition to full device control. Basic purification tasks can be addressed by the function for threshold based fraction collection. Depending on the value of the detector signal, the target substances are automatically collected in different vessels. For each fraction collection block in a program an individual fraction volume can be defined. Choose Mobile Control as a basic, easy-to-use and cost-effective software solution!

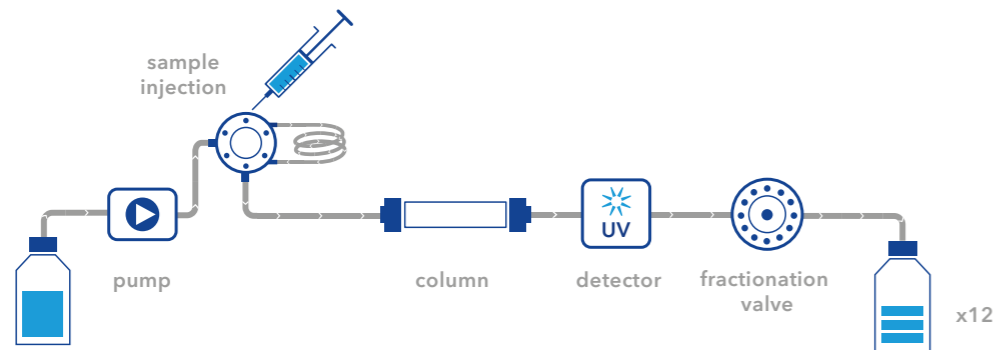
## Chromeleon™ 7

Chromeleon is one of the most wide-spread chromatography data systems. It offers a broad range of third-party drivers and can be easily used with existing HPLC systems. Chromeleon drivers for many KNAUER devices are available.



# AZURA® Compact Prep HPLC System

The AZURA® Prep Compact system is the perfect start into preparative chromatography. With the complete, semi-preparative HPLC system you master your isocratic purification tasks.



## Compact Prep System

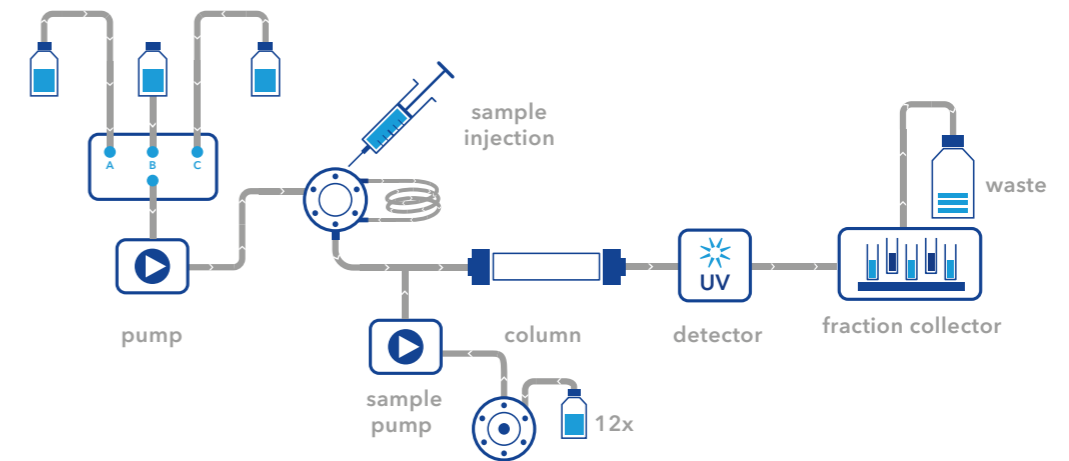
One manual injection can purify several hundred milligrams at up to 50 ml/min. Detection takes place via a versatile UV/VIS detector. The intuitive preparative software PurityChrom controls the compact

system and regulates the fraction collection via a 12-port fractionating valve. Thanks to its compact design, the AZURA Prep Compact system finds its place in every laboratory.

- Complete **semi-preparative** isocratic HPLC system with **low space** requirements
- Injection valve incl. **500 µl sample loop**
- **UV/VIS detector** with one variable wavelength
- Intuitive **PurityChrom®** software
- **Compact** and **expandable**



## Easy upgrade without big investment

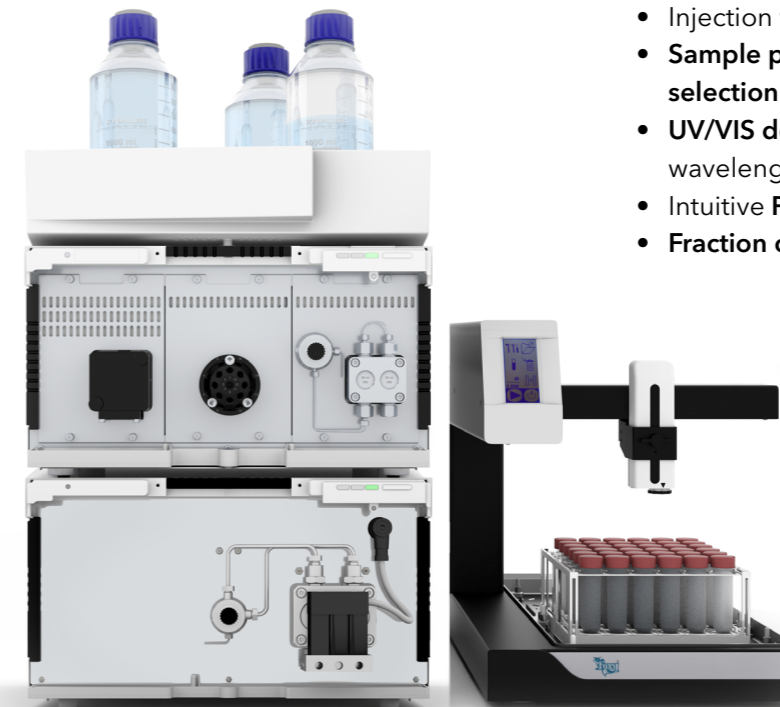


## Pilot Prep System

After starting preparative chromatography with the space-saving prep system, the requirements for your purification tasks can quickly increase. The existing Compact System (50 ml/min) can be

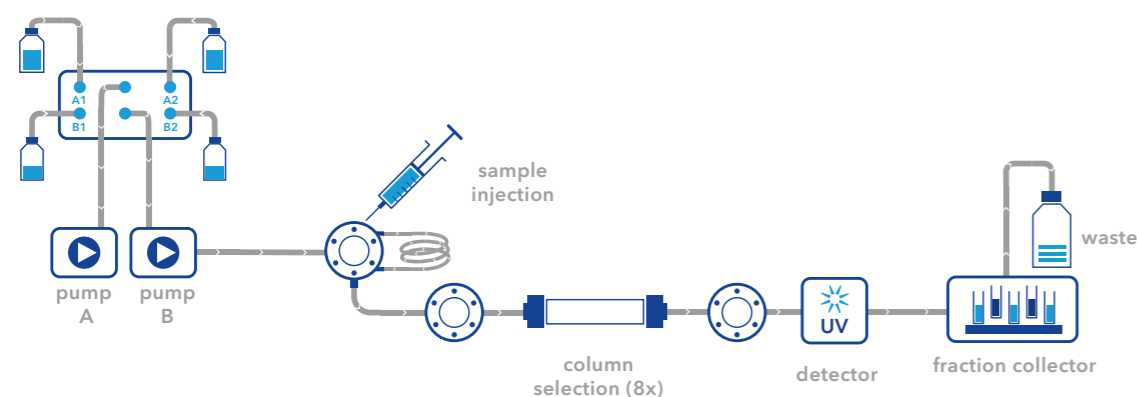
expanded to a Pilot System (220 ml/min) by investing in a fraction collector and a preparative pump. All components of the Compact System are fully integrated into the Pilot System.

- Pilot Ternary gradient HPLC system
- Injection valve incl. **500 µl sample loop**
- **Sample pump with automatic sample selection**
- **UV/VIS detector** with one variable wavelength
- Intuitive **PurityChrom®** software
- **Fraction collector**



# AZURA® Lab Prep HPLC System

The Lab Prep LC system is designed for your more demanding semi-preparative separations. You can customize a highly flexible LC system with the freely combinable components. With a maximum flow rate of 50 ml/min it is possible to separate up to several hundred milligrams per run.



- Lab Prep HPLC system with **binary high pressure gradient**
- **Column selection**
- Injection valve incl. **500 µl sample loop**
- **UV/VIS detector** with one variable wavelength
- Intuitive **PurityChrom®** software
- **Fraction collector**



## Method transfer from analysis of chamazulen to preparative scale

Chamomile plants are known for their medical properties, having among others anti-inflammatory, analgesic and sedative effects. These are due to the various phenolic compounds, one of them matricine is converted during the distillation process to chamazulene. The characteristic blue

color of chamomile essential oils as "chamomile blue" is due to chamazulene. It has anti-inflammatory and anti-oxidant activity. The present application tested preparative HPLC to purify chamazulene from commercially available "chamomile blue" oil.

## Results

### Fractionation/Purification

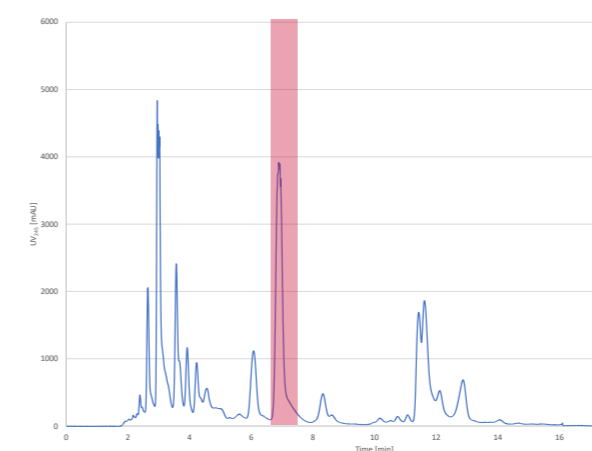


Fig. 1: Chromatogramm of preparative separation of chamazulene blue, collected fraction highlighted in red, 1 ml sample injection

The separation of chamazulene was optimized in analytical scale and the two step gradient method transferred to preparative scale. Chamazulene purification was performed on C18 250x20 mm column, 25 ml/min. Fractionation of chamazulene was conducted by threshold function of PurityChrom software.

The collected fraction was analysed by analytical HPLC and revealed nearly 100 % purity. Chromatogram overlay of the fraction, chamazulene standard and the sample clearly showed the successful purification of chamazulene (Fig. 2). Further the comparison of the fraction spectra and chamazulene spectra (Fig. 3) revealed that the purified fraction was chamazulene.

### Fraction analysis

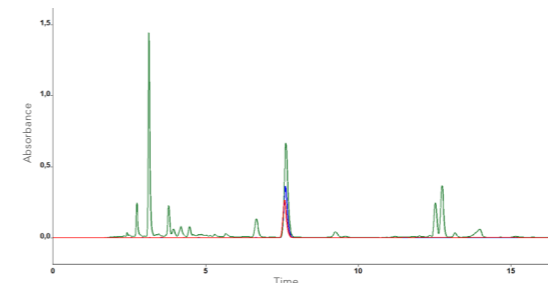


Fig. 2: Chromatogram overlay

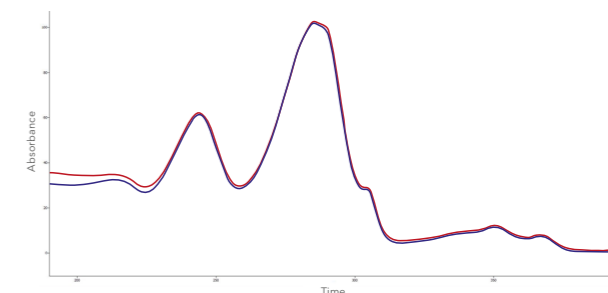


Fig. 3: Spectral view of fraction (-) and of chamazulene standard (-)

## Application Note (VPH0071)

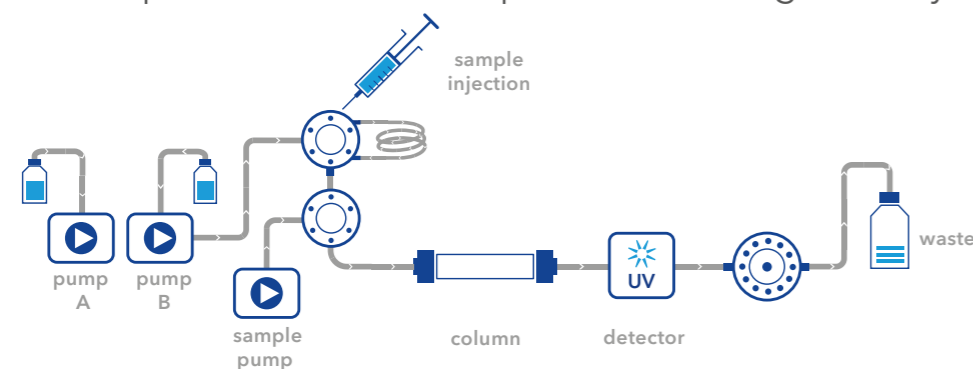
Purification of chamazulene by preparative HPLC and its scale-up  
[www.knauer.net/applications](http://www.knauer.net/applications)





# AZURA® Pilot Prep HPLC System

Choose the Pilot Prep LC system if you want to increase your productivity even more. As for the AZURA Lab Prep LC system you can freely build up your system. Flow rates up to 1000 ml/min and loads up to several grams are possible. Optional peak and solvent recycling can be set up to increase separation power and reduce separation costs significantly.



- Pilot Prep HPLC system with **binary high pressure gradient**
- **Sample pump**
- Injection valve
- **UV/VIS detector** with one variable wavelength
- **12 Port** fractionation valve
- Intuitive **PurityChrom®** software

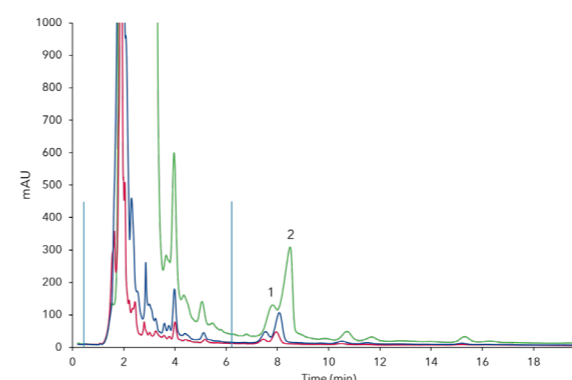


## Improved purity by combining online SPE with preparative LC

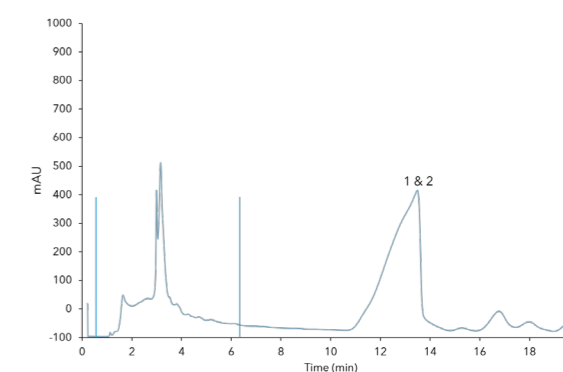
Steviol glycosides are the main sweetening compounds in Stevia rebaudiana and are often used as natural sugar substitutes. To enable a commercial usage, the plant extracts need to be purified. In this work preparative online SPE (solid phase extraction) with the AZURA Pilot Prep LC was investigated for improvement of overall purity due to reduction of matrix contamination.

The steviol glycoside rebaudioside A is the main compound of interest as it is the sweetest and less bitter compound of the extract. Often Stevia products contain a mixture of rebaudioside A and stevioside. The development of a purification method with high yield of rebaudioside A, only few stevioside impurities, and high throughput increases the economic output of Stevia production.

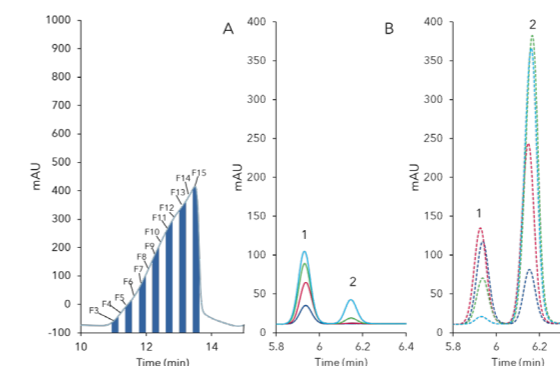
## Results



Overload experiments on preparative column, 200 µL (red), 500 µL (blue), 2000 µL (green); 1) rebaudioside A, 2) stevioside, blue bars - matrix, 25°C, 22 ml/min



Preparative online SPE, 10 mL loading; 1) rebaudioside A, 2) stevioside, blue bars - matrix, 25°C, 22 ml/min



Fraction analysis of preparative online-SPE purification (Fig.2) of rebaudioside A (1) and stevioside (2); a) F3 (blue), F4 (red), F5 (green), F6 (light blue); b) F7 (red dashed), F10 (blue dashed), F12 (green dashed), F15 (light blue dashed); c) fractionation of target peak, 5 mL fractions

Fig. 1 shows the batch LC without online SPE. The matrix peak (1-5min) negatively affect the separation abilities. In comparison Fig 2 shows that the automated SPE process significantly decreased the matrix. The fraction analysis revealed that only a small part of the overlapping peak contained nearly pure rebaudioside A; fractions 3-5 approx. 15 mL with >90 % rebaudioside A and <10% stevioside (Fig. 3, B). The later fractions contained high amounts of stevioside but also still rebaudioside A (Fig. 3 C). The results showed that purification of highly pure rebaudioside A is possible by an additional online-SPE.

## Application Note (VFD0171)

Evaluating preparative online SPE for the purification of stevia leave extracts  
[www.knauer.net/applications](http://www.knauer.net/applications)



# AZURA® SMB systems



Simulated moving bed chromatography (SMBC) is increasingly applied as a separation technique in the pharmaceutical industry, production of fine chemicals and in the field of bioengineering. SMB is a method in process chromatography that enables substance mixtures to be continuously separated and extracted in two fractions. By repeated use of the SMB process each partial fraction can be separated into a further fraction - down to binary substance mixtures. Typically, the SMB process is set up in advance for a two component mixture. Following this, both substances can be immediately extracted in pure form.

**For more information about SMB:**  
[www.knauer.net/smb](http://www.knauer.net/smb)

What is the difference between batch LC and SMBC?

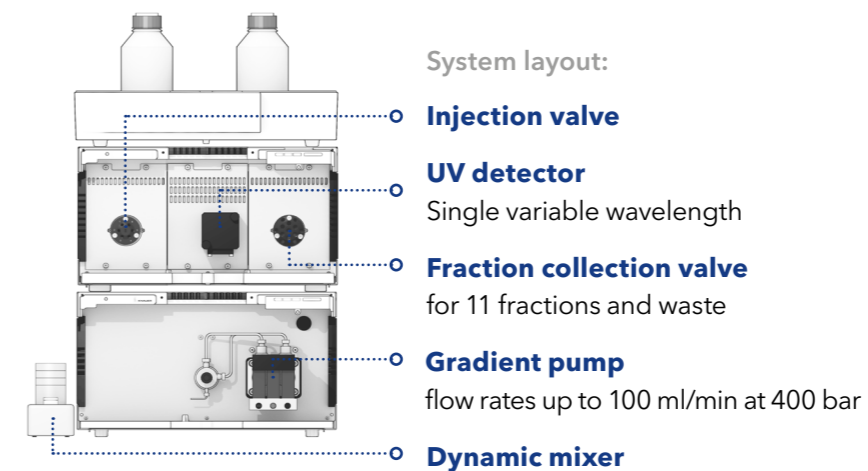
Batch chromatography (single-column)	SMB chromatography (multi-column)
Unlimited number of fractions	Two fractions, no waste
Recovery typically below 80%	Recovery up to 100%
EITHER high purity OR high yield	High purity AND high yield
Isocratic or gradient	Isocratic
High solvent consumption	Can be as low as 10% of batch consumption
Very diluted product	Product concentration comparable with input concentration (feed)

# Preparative HPLC for cannabinoid purification

Whenever highly pure cannabinoids should be produced from Cannabis plants or raw extracts, preparative chromatography is the most versatile method to choose. Take a look at the exemplary developed method to purify cannabidiol (CBD) from CBD oil.

## Cannabis Purifier

Purification of single cannabinoids from extracts of cannabis flos or cannabinoid oil.



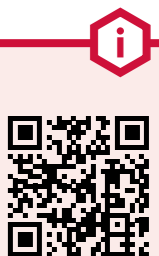
Easy scale-up by changing the pump head, valves, flow cell, and capillaries. No exchange of devices necessary.

# SMB for cannabinoid purification

Whether to favor batch LC or a continuous process like simulated moving bed (SMB) chromatography, depends on the specific customer's needs. KNAUER has extensive experiences in customized solutions for both types of applications for the cannabis industry.

## More information

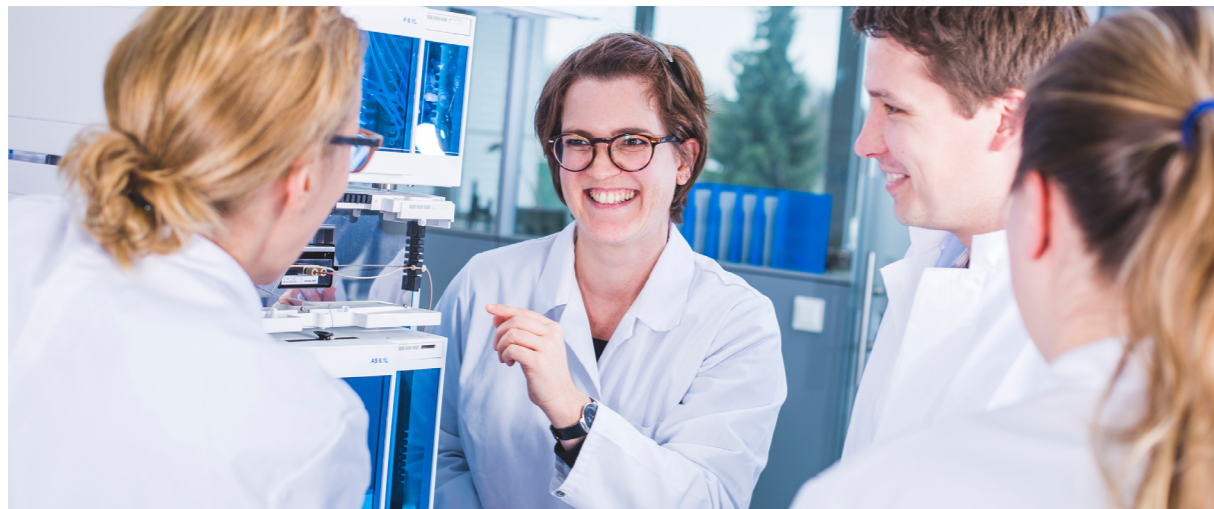
For more information about analyzing and purifying Cannabis:  
[www.knauer.net/cannabis](http://www.knauer.net/cannabis)



# About KNAUER

Based in Berlin, KNAUER is a medium-sized, owner-managed company that has been serving the sciences since 1962. We develop and manufacture scientific instruments of superior quality for liquid chromatography. The range includes sys-

tems and components for analytical HPLC / UHPLC, preparative HPLC, fast protein liquid chromatography (FPLC), multi-column chromatography / simulated moving bed (SMB), and osmometry.



KNAUER Academy



Worldwide partner in science since 1962

## We separate molecules and unite people.



CEO and owner Alexandra Knauer

The founder Dr. Herbert Knauer and his wife Roswitha are still active as advisers in the company to this day. The couple's daughter, Alexandra Knauer, has been managing director

and owner of the company since 2000. Several awards for outstanding products and innovations as well as entrepreneurial excellence make KNAUER a „leading employer“.

Independent and family owned



[www.knauer.net](http://www.knauer.net)



# KNAUER Services



- APPLICATION SERVICES**  
 HPLC method development, HPLC method transfer & optimization, Rent-an-expert
- COMPLIANCE**  
 Qualification documents, Material certification, FAT/SAT, Capillary labeling
- TECHNICAL SERVICE & SUPPORT**  
 Installation & Instruction, Maintenance, Repair, Support
- ACADEMY**  
 HPLC trainings, Specialized courses and workshops for beginners and experienced users



Stay up to date with our training dates!  
[www.knauer.net/academy](http://www.knauer.net/academy)

## Contact us

All standard user instructions, helpful video tutorials, and a structured section of frequently asked questions is freely accessible on our web page [www.knauer.net](http://www.knauer.net).

If you need further support, our friendly Support team is happy to help you via e-mail, phone or Team Viewer. They will work with you personally until all issues are resolved.

Phone: +49 30 809727-111 (workdays 9-17h CET)

Email: [support@knauer.net](mailto:support@knauer.net)

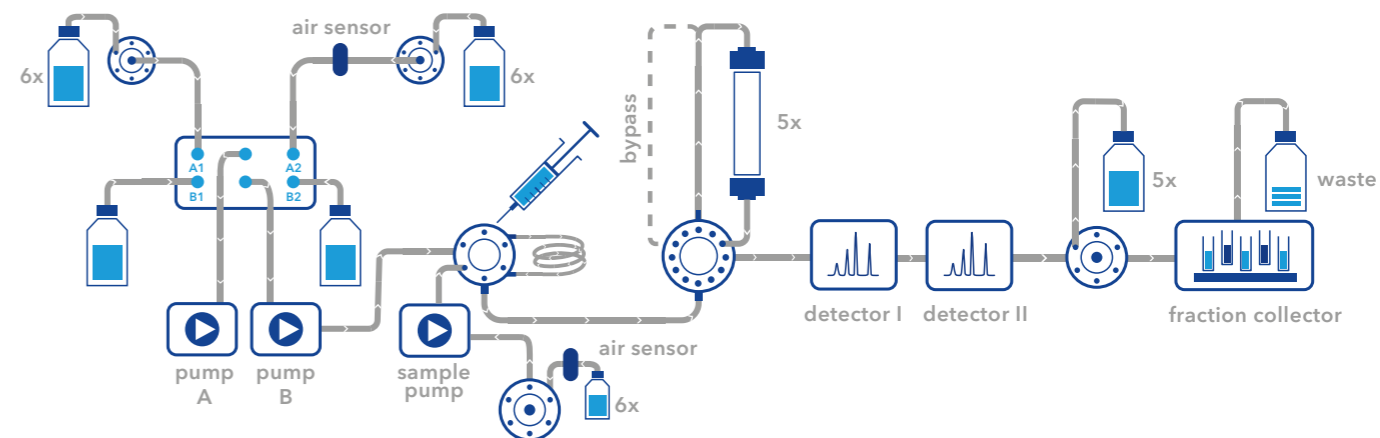
# System configurator

## Preparative HPLC by KNAUER

### MAKE YOUR PRESELECTION

Stainless steel

Biocompatible



#### SOLVENT SELECTION & DELIVERY

- 50 ml/min binary gradient pump P 6.1L
- ..... x 100 ml/min pump P 2.1L
- ..... x 250 ml/min pump P 2.1L
- ..... x 500 ml/min pump P 2.1L
- ..... x 1000 ml/min pump P 2.1L
- Ternary gradient module for pump P 2.1L
- Binary gradient module for pump P 2.1L
- ..... x solvent selection valve

#### SAMPLE INJECTION

- Injection valve
- Sample pump module
- Sample selection valve: ..... x inlets
- Autosampler AS 6.1L

#### COLUMN SELECTION & THERMOSTAT

- Column selection (two columns or one bypass)
- Column selection high flow (5 columns, one bypass)

#### DETECTION

- UV/VIS single wavelength
- UV/VIS multiwave length
- DAD 2.1L
- Conductivity
- pH
- Refractive index
- Light Scattering
- 4000 MiD
- A/D-converter (integration of further detectors)

#### FRACTION COLLECTION

- Fractionation valve
- Foxy fraction collector with fixed rack types
- Labocol fraction collector with individual rack types
- Rack for fraction collector
- Flow splitter

#### ACCESSORIES

- ..... x Airsensor main pump
- ..... x Airsensor feed pump
- ..... x Tubing 1/16"
- ..... x Tubing 1/8"
- ..... x Tubing 1/4"
- Mass flow controller
- AZURA Click
- AZURA Organizer
- Workstation (Windows)

#### SOFTWARE

- ClarityChrom®
- Chromeleon™
- OpenLAB®
- Mobile Control
- PurityChrom®

#### COMMON APPLICATIONS

- Reversed phase
- other...
- Normal phase
- System Qualification

Analytical  
HPLC

Multi-Column  
Chromatography,  
SMB

Preparative  
HPLC

FPLC

Osmometry

Dosing,  
Metering,  
Pumping

Detection

Technical data or prices are subject to change without notice. Prices may vary by country and do not include taxes, customs duties or delivery.

All trademarks are the property of their respective owners. Our general terms and conditions apply: [www.knauer.net/terms](http://www.knauer.net/terms)

Distributed by:

**KNAUER**  
Wissenschaftliche Geräte GmbH  
Hegauer Weg 38  
14163 Berlin, Germany

+49 30 809727-0  
+49 30 8015010 (Fax)  
[info@knauer.net](mailto:info@knauer.net)  
[www.knauer.net](http://www.knauer.net)

